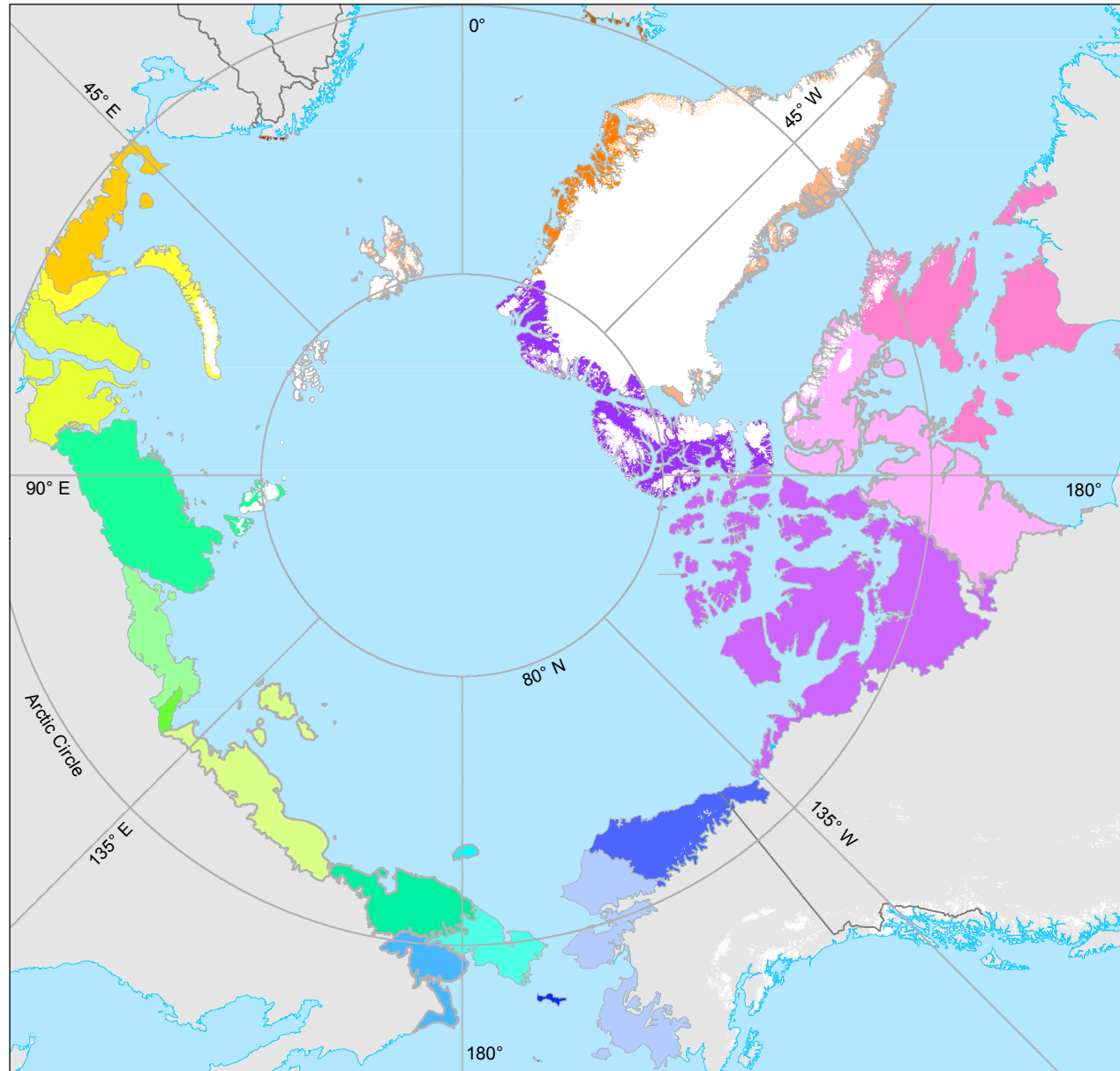


Circumpolar Arctic Region Floristic Provinces



European Russia-West Siberia

- Kanin-Pechora
- Polar Ural-Novaya Zemlya
- Yamal-Gydan

East Siberia

- Taimyr
- Anabar-Olenyek
- Kharaulakh
- Yana-Kolyma

Beringia

- Wrangell Island
- West Chukotka
- East Chukotka
- South Chukotka
- Beringian Alaska
- North Beringian Islands
- Northern Alaska

Canada

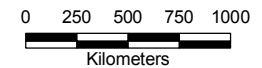
- Central Canada
- West Hudsonian
- Ellesmere-North Greenland

North Atlantic

- Baffin-Labrador
- West Greenland
- EastGreenland
- North Iceland-Jan Mayen
- North Fennoscandia
- Svalbard-Franz Josef Land

Other

- Glaciers
- Non-Arctic areas



Lambert Azimuthal Equal Area Projection
Longitude of origin: -180°, Latitude of origin: 90°

Derived from: CAVM Team. 2003. Circumpolar Arctic Vegetation Map. (1:7,500,000 scale), Conservation of Arctic Flora and Fauna (CAFF) Map No. 1. U.S. Fish and Wildlife Service, Anchorage, Alaska.