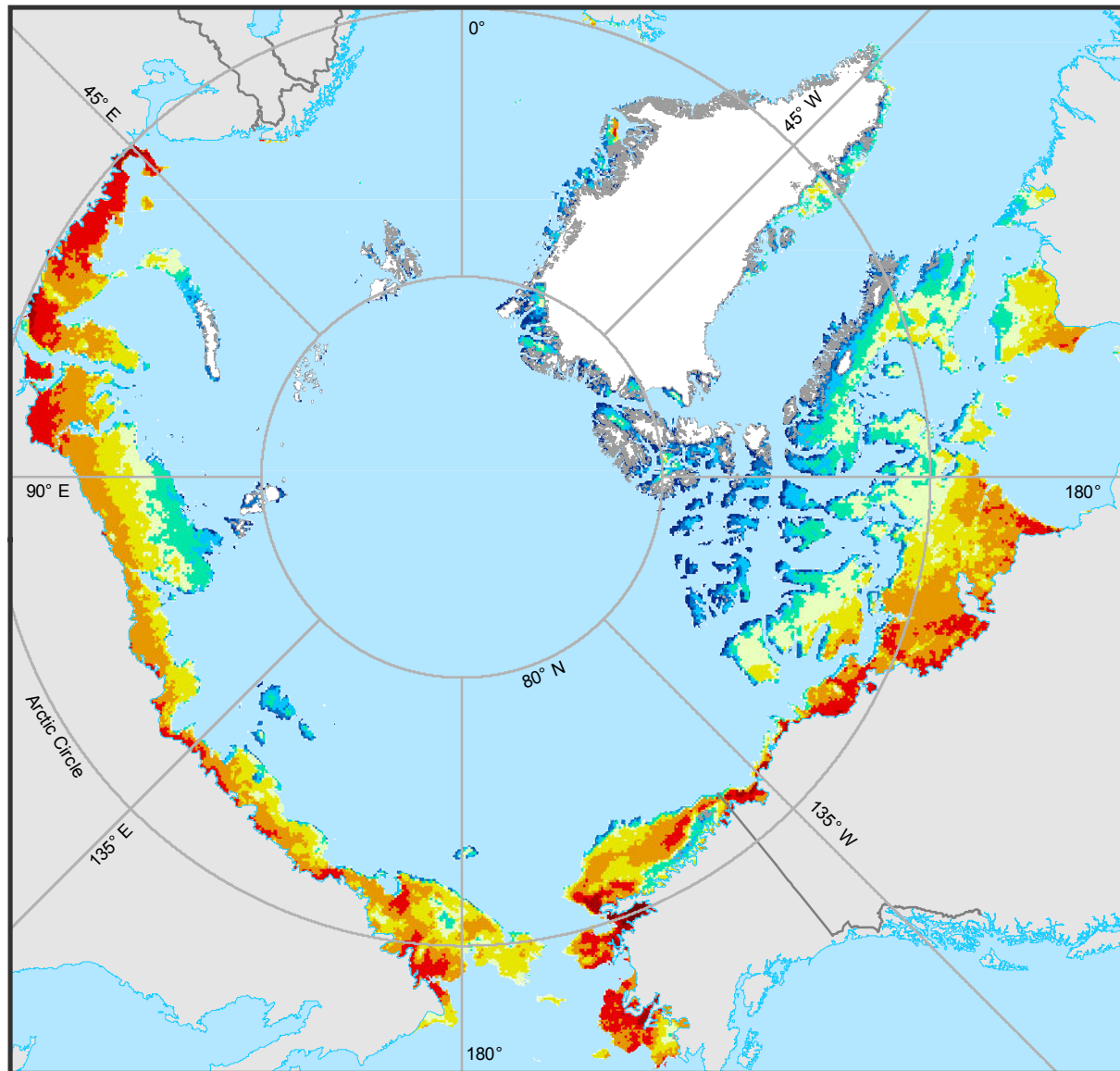
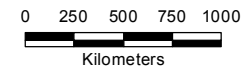


## Circumpolar Summer Warmth Index



### Summer Warmth Index (°C)



Lambert Azimuthal Equal Area Projection  
Longitude of origin: -180°, Latitude of origin: 90°

Raynolds, M. K., J. C. Comiso, D. A. Walker, and D. Verbyla. 2008. Relationship between satellite-derived land surface temperatures, arctic vegetation types, and NDVI. *Remote Sensing of Environment* 112: 1884-1894.

<http://www.ArcticAtlas.org/>